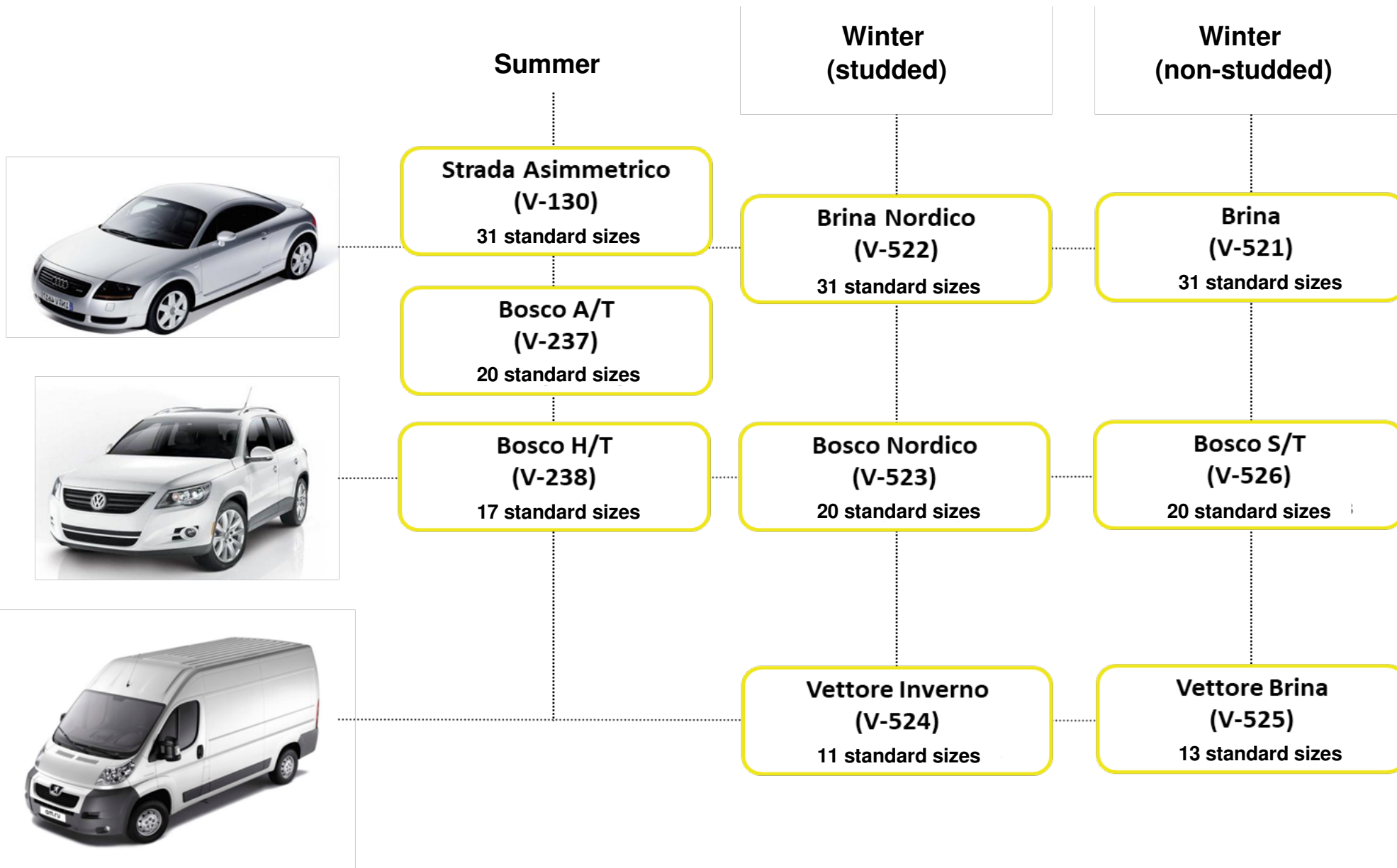


## Viatti brand history

Viatti brand tires are produced in Russia by order of OOO Viatti Tyres Rus. The founders of the Company are foreign investors from Germany and Italy, highly experienced in tire manufacturing in their home countries.

Tire production launched at the production facilities of OAO Nizhnekamskshina on an offtake system basis. OOO Trading House "Kama" is the general distributor. The reasons for choosing the Nizhnekamsk production site:

1. The presence of a large parent company - one of the largest Russian oil companies OAO TATNEFT;
2. Advanced production equipment allowing to produce tires of required quality and quantity;
3. OAO TATNEFT Tire Complex tire production experience on an offtake system basis for foreign partners;
4. OOO Trading House "Kama" complete commodity distribution network covering all constituent entities of the Russian Federation and 42 countries of the world;
5. OAO Nizhnekamskshina's experience of cooperation with the largest automotive manufacturing plants in the Russian Federation - AVTOVAZ, GM, VW-Skoda, Ford, Renault-Nissan, FIAT.
6. Availability of own certified laboratory and scientific and technical center.



Strada Asimmetrico is a line of passenger tires with an asymmetric non-directional road tread pattern. The tire range includes 31 standard sizes with bead seat diameter from 13 to 18 inches. The tire operating temperature range is from + 2 to + 55° C. Designed for use on roads with enhanced heavy-duty road surfacing.



**Outside**



**Inside**

### **Asymmetric tread pattern**

The asymmetric tread pattern gives the tire optimal grip on both dry and wet surfaces. Promotes better straight-line handling as well as during cornering and changing lanes.



### **VRF <sup>1</sup> Technology**

The tire features variable sidewall stiffness due to the addition of a patented co-synthesis product to the rubber compound. This property allows the tire to adapt to the condition of road surface, thus cushioning the impacts on worn-down roads and increasing sidewall stiffness at high speeds.

## **1 - Variable rigidity of a framework**

Outside



Inside



### Hydro Safe S Technology

Wide longitudinal grooves efficiently remove water from the contact patch. The widest groove on the tread outside contributes to high cornering stability on wet surfaces.

The reinforcing ribs between the grooves ensure the road-holding ability of the vehicle.

### High speed lateral grooves

High-speed lateral grooves with increased elasticity on the tread inside for improved aquaplaning resistance and increased ride comfort.

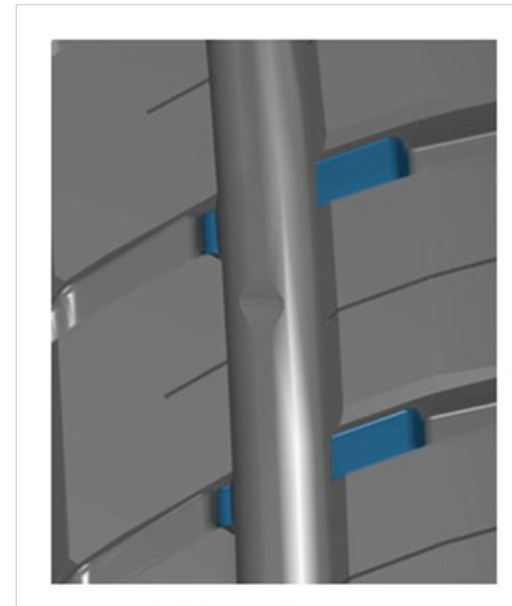
The depth of the lateral grooves in the shoulder area is minimized, thereby accelerating the flow of the water mass removed from the contact patch.



### Tire for different weather conditions

The outer side of the tread (OUTSIDE) gives the tire excellent handling on dry road surfaces. Steerability is ensured by a rigid rubber mass that forms longitudinal and lateral grooves in the shoulder area of the tread.

The inner side of the tread (INSIDE) gives excellent handling on wet road surfaces. Steerability is ensured by reinforcement in lateral grooves and drainage of longitudinal and lateral grooves.



### Comfort

Specially spaced micro-ridges of circumferential grooves on the inside of the tread reduce the noise level.



*VRF (Variable rigidity of a framework) technology - Variable sidewall stiffness - changes with speed - the tires adapt to the road surface, thus cushioning impacts caused by potholes and asphalt joints when driving on rough road as well as enabling confident high-speed cornering*

*Hydro Safe S Technology – Three wide longitudinal grooves effectively remove water from the contact patch. The widest groove is located on the outside, which provides high cornering stability on wet surfaces.*

*Strada Asimmetrico solid ribs on the central and outside parts of the tread distribute the load evenly when driving at high speed and cornering.*

*High-speed lateral grooves with increased elasticity on the inside of the tread for improved aquaplaning resistance and increased ride comfort.*

*Strada Asimmetrico robust central and inside parts of the tread contribute to more efficient traction force transmission.*

Bosco A/T is a line of tires for SUV class vehicles with symmetric non-directional road tread pattern.

The tire range includes 20 standard sizes with bead seat diameter from 15 to 18 inches.

Designed for use on roads with enhanced light-duty and heavy-duty road surfacing at an ambient temperature from + 2 to + 55°C.







### **VRF<sup>1</sup> Technology**

The tire features variable sidewall stiffness due to the addition of a patented co-synthesis product to the rubber compound. This property allows the tire to adapt to the condition of road surface, thus absorbing shocks on worn-down roads and increasing sidewall stiffness at high speeds.



### **Hydro Safe Technology**

Four longitudinal grooves remove water from the contact patch more quickly and efficiently. This is also facilitated by non-uniform geometry and sharp-facet central blocks, which break the water film more efficiently.

## ***1 - Variable rigidity of a framework***



### NoNoise Technology

The lateral grooves of various geometry in the central area of the tread and sipes curved at a certain angle reduce pattern uniformity and noise generation.

The longitudinal groove ledges create additional grip and also prevent noise generation.



### HighStab Technology

The tread pattern with a central reinforcing rib and reinforced longitudinal blocks enables perfect stability during straight line driving and high-speed active maneuvering.



**DirtMove Technology**

The tread pattern with wide lateral grooves in the shoulder area, which, together with special lugs between the sipes of shoulder blocks, enhance cross-country capability of a vehicle.



**up to 205 mm  
inclusive**



**over 215 mm  
inclusive**

**Two tread patterns**

Depending on the profile width, the tires of Bosco A/T range have two types of tread pattern. Tires of 215 mm wide and above have an additional central reinforcing rib.



*VRF (Variable rigidity of a framework) technology - Variable sidewall stiffness - changes with speed - the tires adapt to the road surface, thus cushioning impacts caused by potholes and asphalt joints when driving on rough road as well as enabling confident high-speed cornering*



*Hydro Safe S Technology – four wide longitudinal tread grooves of non-uniform geometry and sharp-facet central blocks efficiently break water film and remove liquid from the contact patch.*



*DirtMove Technology (OpenWay) – Bosco A/T tread pattern with wide lateral grooves in the shoulder area, which, together with special lugs between the sipes of shoulder blocks, enhance cross-country capability of a vehicle.*



*NoNoise technology – curved sipes reduce the noise level, enhance grip and minimize irregular wear.*



*HighStab technology – the tread pattern with a central reinforcing rib and reinforced longitudinal blocks enables perfect stability during straight line driving and high-speed active maneuvering.*

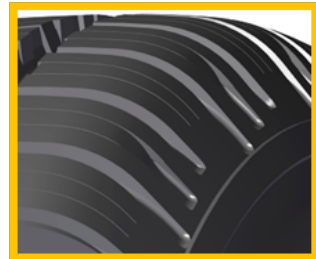


Improved tire profile geometry that provides the correct deformation behavior at the moment of loading, optimizing the performance of the tire itself.

The optimal pressure distribution in the contact patch increases the contact area of the tire with the road surface, provides stability and improved handling.



The use of a patented co-synthesis product in the rubber compound with better reinforcing properties in comparison with the raw materials traditionally used in the production of tires, allows to reduce the weight of the finished tire. The new product also reduces heat build-up in the tire, increasing its running life.

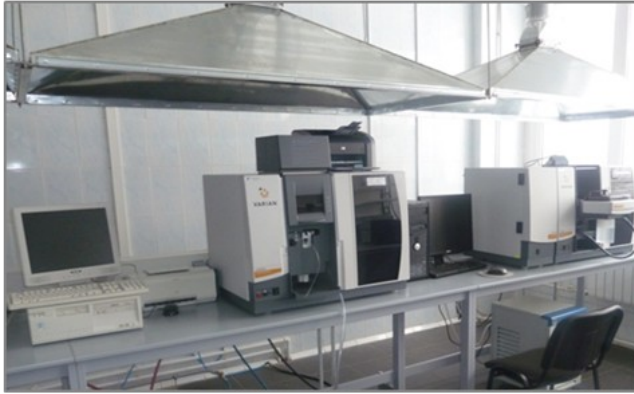


Smooth sidewall transition to tread provides more efficient handling on hard surfaces.



Viatti tires are designed to meet Russian climatic and road conditions. The combination of silica and a patented co-synthesis product in a rubber compound is responsible for maintaining the consumer properties within the declared temperature range. Reliability on Russian roads is ensured by the use of new materials in tire belt and sidewall.

## Chemical laboratory



## Physical and mechanical laboratory



## Test center



### Preproduction of rubber compounds

Manufacturing of rubber compounds for the production of various semi-finished products

### Preparation and building area

- Steel cord cutting line;
- Calender line;
- Bead ring machine;
- Tread line (Duplex, Triplex, Quadruplex);
- Innerliner line;
- Cap ply manufacturing line;
- Green tire spraying machine;
- Bead apex machine;
- Tire building machine

### Curing area

- Curing press (42/46/52");
- Curing mold cleaning machine

### Quality inspection

- Tire uniformity measurement machine

**TYRES**  
**VIATEI**  
Paradigma del comfort

**BOSCO A/T**  
235/55R17 99H 240 km/h

Fuel Economy: E  
 Wet Grip: C  
 Noise: 74 dB

1222/2009-C1

4 604278 000098

[www.viatti-tyres.com](http://www.viatti-tyres.com)  
 e-mail: [info@td-kama.com](mailto:info@td-kama.com)  
 8 800 100 12 72  
 Toll free in Russia

**TYRES**  
**VIATEI**  
Paradigma del comfort

**STRADA ASIMMETRICO**  
195/65R15 91V 240 km/h

Fuel Economy: E  
 Wet Grip: B  
 Noise: 73 dB

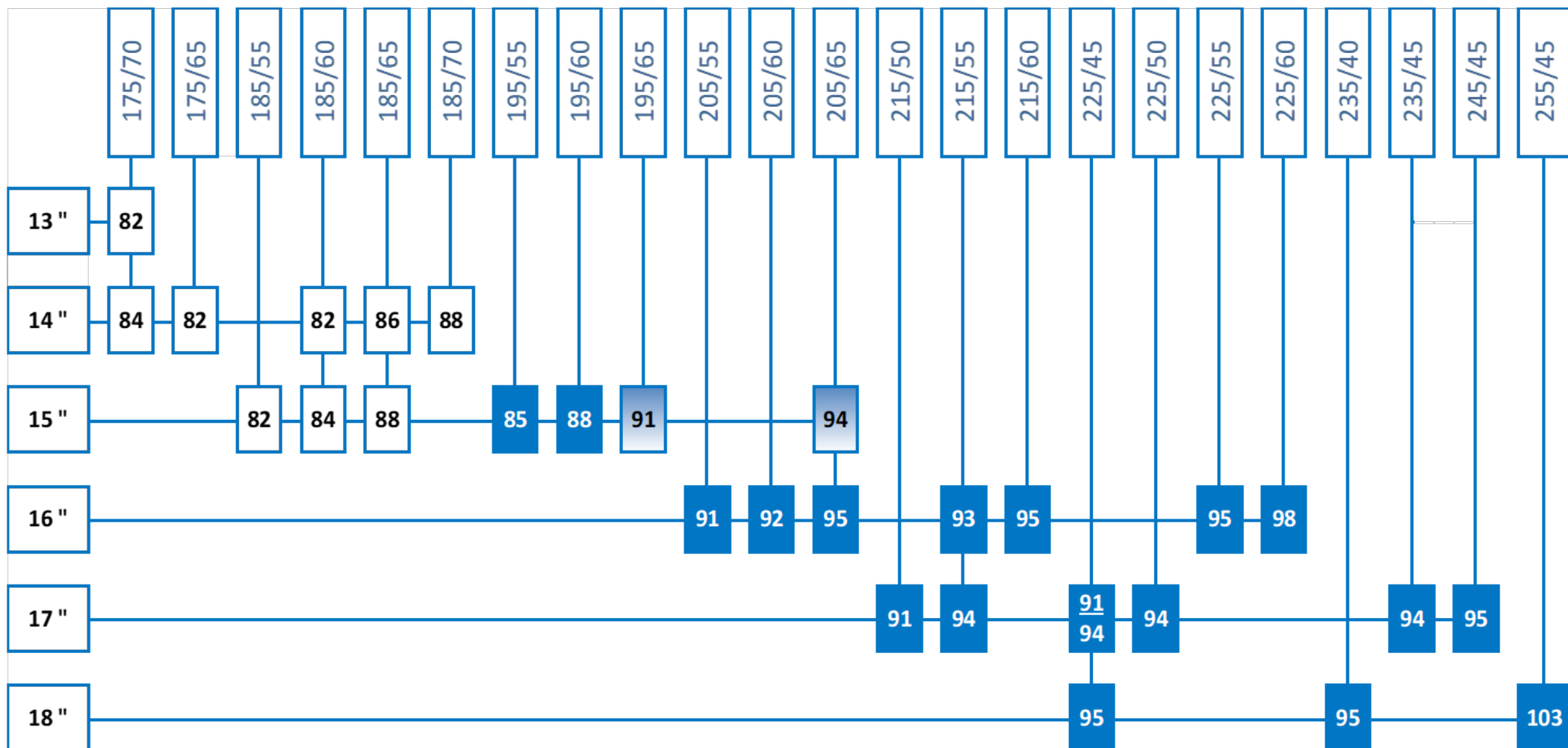
1222/2009-C1

4 604278 000098

[www.viatti-tyres.com](http://www.viatti-tyres.com)  
 e-mail: [info@td-kama.com](mailto:info@td-kama.com)  
 8 800 100 12 72  
 Toll free in Russia

Viatti tires have proven their high quality in numerous tests to meet Russian and international quality standards.

The tires supplied for export are provided with labels displaying fuel economy, wet grip and external noise levels recorded during the tests for compliance with EU Regulation No. 1222/2009.



X Speed rating "H" (210 km/h)

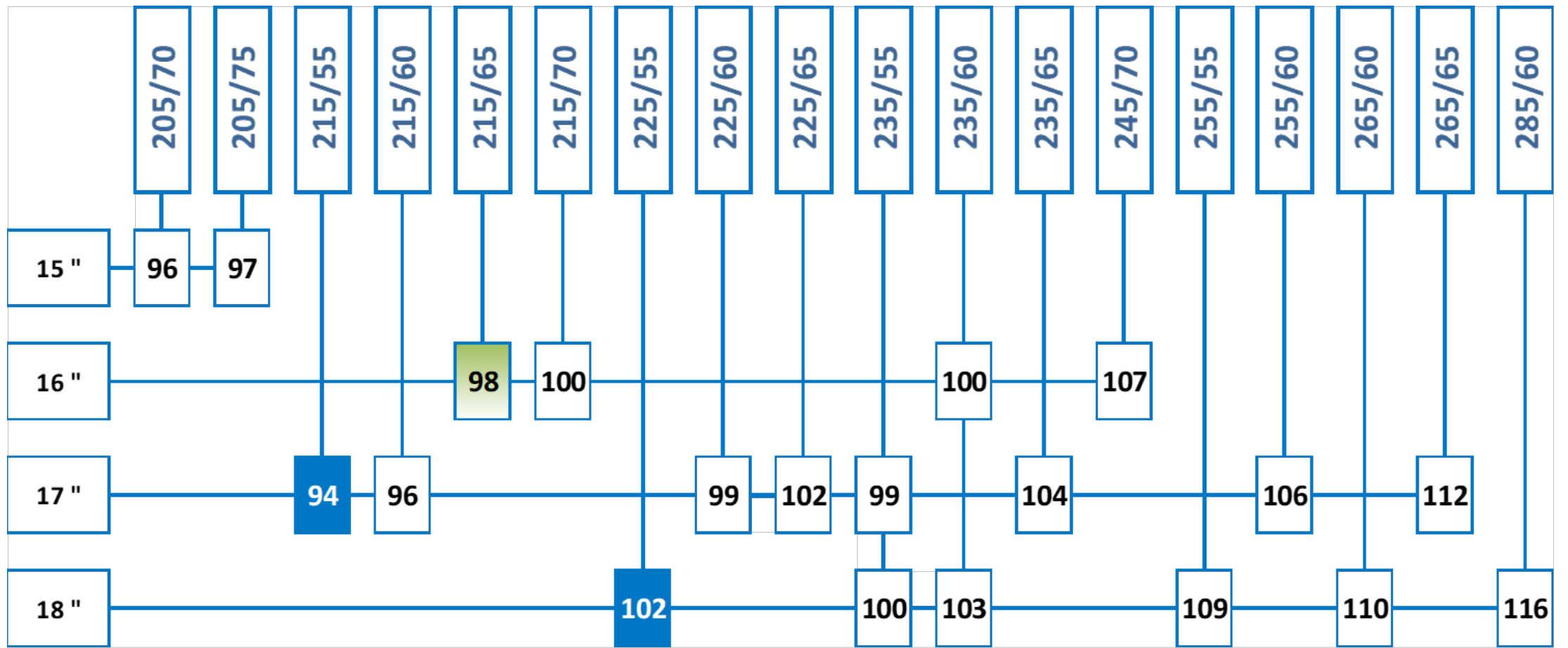
X Speed rating "V" (240 km/h)

X Tire with two speed ratings: "H" (210 km/h) and "V" (240 km/h)



No.	Size	Main applicability
1	175/70R13	LADA, Hyundai Accent, Daewoo Nexia
2	175/65R14	LADA, Hyundai Getz
3	175/70R14	VW Polo sedan, Nissan Almera, FIAT Albea
4	185/60R14	LADA, Daewoo Nexia, Chevrolet Aveo/Lanos
5	185/65R14	LADA, KIA Spectra, Chevrolet Lacetti
6	185/70R14	Renault Logan/Sandero, Ford Focus, Opel Corsa
7	185/55R15	LADA, Opel Corsa, Nissan Mirca
8	185/60R15	VW Polo sedan, Toyota Yaris, Geely MK
9	185/65R15	Hyundai Solaris, KIA Rio III, Renault Logan/Sandero
10	195/55R15	VW Polo sedan, Chevrolet Lacetti, Skoda Fabia
11	195/60R15	Toyota Corolla, Mitsubishi Lancer, Ford Fusion
12	195/65R15	Ford Focus, Mazda 3, Skoda Octavia, Renault Megane
13	205/65R15	Renault Megane/Fluence, Hyundai Sonata
14	205/55R16	Ford Focus, KIA Cee'd, Opel Astra, Toyota Corolla
15	205/60R16	Chevrolet Cruze, Mitsubishi Lancer, Nissan Primera

No.	Size	Main applicability
16	205/65R16	Nissan Teana, Audi A4, Hyundai Sonata
17	215/55R16	Ford Focus/Mondeo, VW Passat, Peugeot 308/408
18	215/60R16	Toyota Camry, Skoda Yeti, Subaru Forester
19	225/55R16	Audi A4/A6, BMW 5 series, Mercedes E-class
20	225/60R16	Audi A8, Mercedes S-class, Citroen C5
21	215/50R17	Opel Astra, Mazda 6, Chevrolet Cruze
22	215/55R17	Nissan Teana, Toyota Camry, KIA Optima/Insignia
23	225/45R17	KIA Cee'd, Honda Civic, Hyundai i30
24	225/50R17	Opel Astra, Audi A5, BMW 5 series/X1
25	235/45R17	VW Passat, Ford Mondeo, Volvo S60
26	245/45R17	Mercedes E-class/C-class, Audi A6, Lexus IS
27	225/45R18	Mazda 6, Opel Astra, KIA Optima
28	235/40R18	Ford Focus/Mondeo, Mazda 6, Mercedes C-class
29	255/45R18	Mercedes S-class, Audi A7



**X** | Speed rating "H" (210 km/h)

**X** | Speed rating "V" (240 km/h)

**x** | Tire with two speed ratings:  
"T" (190 km/h) and "H" (210 km/h)

No.	Size	Main applicability	No.	Size	Main applicability
1	205/70R15	Chevrolet Niva, Suzuki Jimny, Honda CR-V	11	235/55R17	VW Tiguan, Ford Kuga, BMW X3, Volvo XC70
2	205/75R15	Chevrolet Niva	12	235/65R17	VW Touareg, Volvo XC90, Audi Q5, BMW X5
3	215/65R16	Renault Duster, VW Tiguan, Nissan Qashqai	13	255/60R17	VW Touareg, Chevrolet TrailBlazer
4	215/70R16	Mitsubishi Outlander, KIA Sportage, Toyota RAV4	14	265/65R17	Toyota LC Prado, Mitsubishi Pajero
5	235/60R16	KIA Sportage, Suzuki Grand Vitara, Hyundai Tucson	15	225/55R18	Mitsubishi Outlander, Hyundai ix35, Nissan X-Trail
6	245/70R16	UAZ Patriot, Mitsubishi L200, KIA Sorento	16	235/55R18	KIA Sportage, Chevrolet Captiva, Opel Antara
7	215/55R17	Nissan Juke, Subaru Forester, Mitsubishi Outlander	17	235/60R18	Hyundai Santa Fe, Mazda CX-7, Audi Q5/Q7
8	215/60R17	Nissan Qashqai, BMW X3, Mitsubishi ASX	18	255/55R18	BMW X5, Mercedes M-class, Audi Q7
9	225/60R17	Nissan X-Trail, Hyundai X35, KIA Sportage	19	265/60R18	Toyota LC Prado, Mitsubishi Pajero, Infiniti FX
10	225/65R17	Toyota RAV4, Suzuki Grand Vitara, Honda CR-V	20	285/60R18	Toyota LC, Lexus LX